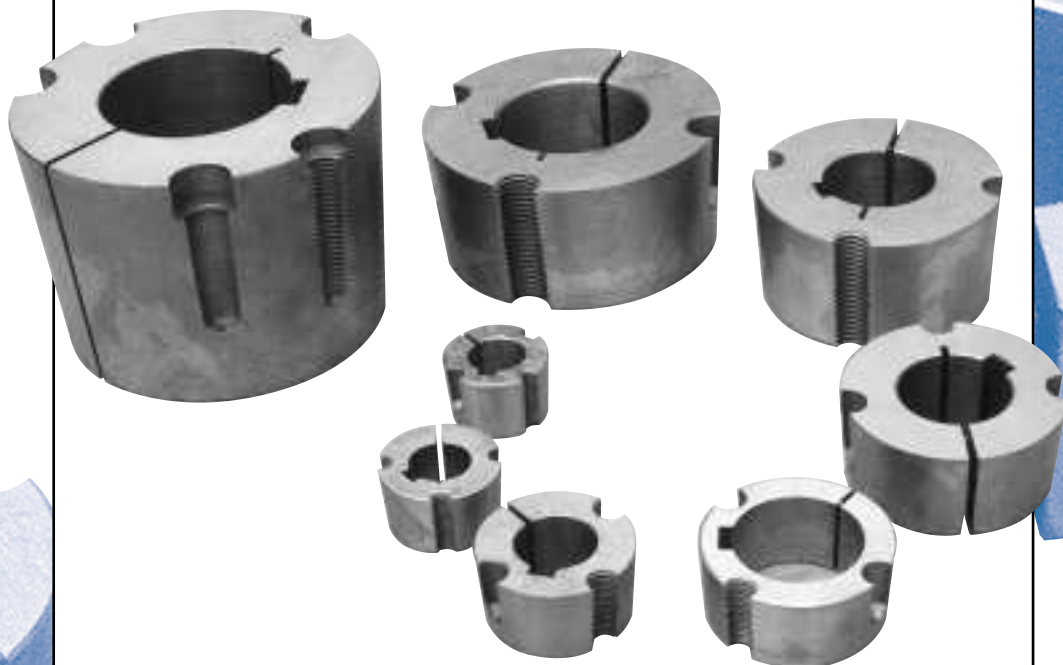


BUSSOLE CONICHE ***TAPER BUSHES***



DIMENSIONI / FORI METRICI - DIMENSION/METRIC BORES

Ø foro/bores Ø D	Chiavetta/Keyway larghezza width b	profondità height h	1008	1108	1210	1215	1610	1615	2012	2517	3020	3030	3535	4040	4545	5050
10	3	1,4														
11	4	1,8														
12	4	1,8														
14	5	2,3														
16	5	2,3														
18	6	2,8														
19	6	2,8														
20	6	2,8														
22	6	2,8														
24	8	1,3	*													
		3,3														
25	8	1,3	*													
		3,3														
28	8	1,3		*												
		3,3														
30	8	3,3														
32	10	1,3														
		3,3														
35	10	3,3														
38	10	3,3														
40	12	1,3														
		3,3														
42	12	1,3					*	*								
		3,3														
45	14	3,8														
48	14	3,8														
50	14	2,8														
		3,8														
55	16	4,3														
60	18	4,4														
65	18	4,4														
70	20	4,9														
75	20	4,9														
80	22	5,4														
85	22	5,4														
90	25	3,4														
		5,4														
95	25	5,4														
100	28	4,4														
		6,4														
105	28	6,4														
110	28	6,4														
115	32	7,4														
120	32	7,4														
125	32	7,4														

Le sedi chiavetta rispondono alle norme DIN eccetto quelle contrassegnate con * che hanno la sede chiavetta ribassata.

BUSSOLE CONICHE / TAPER BUSHES

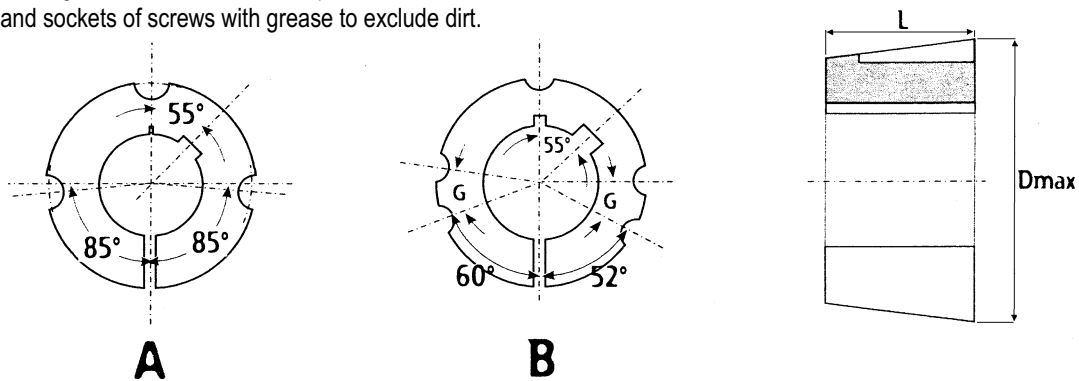
ISTRUZIONI PER L'INSTALLAZIONE DELLE PULEGGE CON SERRAGGIO A BUSSOLA CONICA HOW TO INSTALL TAPER BUSHES

To install:

- 1 - Remove the protective coating from the bore and outside of bush, and bore of hub. Use an oil free cleaning liquid (ie; paint thinners). After ensuring that the mating tapered surfaces are completely clean and free from oil and dirt. Insert bush in hub so that threaded holes in hub line up with non-threaded holes in bush.
- 2 - Place screw loosely in holes threaded in hub.
- 3 - If a key is to be fitted, place it in the shaft keyway before fitting the bush. It is essential that it is a parallel key, side fitting only and has TOP CLEARANCE.
- 4 - Clean shaft, fit hub and bush to shaft as one unit and locate in position desired, remembering that the bush will nip the shaft first and then the hub will be slightly drawn on to the bush.
- 5 - Using an ALLEN KEY tighten screws gradually and alternatively until required.
- 6 - TAP against large end of bush, using a block or sleeve to prevent damage. (This will ensure that the bush is seated squarely in the bore). Screws can now be tightened further. Repeat this alternative tapping and screw tightening once or twice to achieve maximum grip on the shaft.
- 7 - After drive has been running under load for a short time stop the drive and check.
- 8 - Fill empty holes and sockets of screws with grease to exclude dirt.

To remove:

- 1 - Release all screws by several turns. Insert screws in extraction holes.
- 2 - Tighten screws alternatively until bush is loose in hub and the assembly is free.
- 3 - Remove assembly from shaft.



Tipo bussola Type	Coppia di serraggio Wrench torque Nm	Peso / Weight Kg Dmin. lg	D Max mm	L mm	Brugola Bolt size		Chiave per brugola Allen wrench	
1008 A	5,7	0,12	35,0	22,3	1/4"	X	1/4"	3,0
1108 A	5,7	0,16	38,0	22,3	1/4"	X	1/4"	3,0
1210 A	20	0,28	47,5	25,4	3/8"	X	5/8"	5,0
1215 A	20	0,39	47,5	38,1	3/8"	X	5/8"	5,0
1310 A	20	0,32	50,5	25,4	3/8"	X	5/8"	5,0
1610 A	20	0,42	57,0	25,4	3/8"	X	5/8"	5,0
1615 A	31	0,61	57,0	38,1	3/8"	X	5/8"	5,0
2012 A	49	0,75	70,0	31,8	7/16"	X	7/8"	6,0
2517 A	49	1,1	85,5	44,5	1/2"	X	1"	6,0
3020 A	92	2,61	108,0	50,8	5/8"	X	1 1/4"	8,0
3030 A	92	3,8	108,0	76,2	5/8"	X	1 1/4"	8,0
3535 B	115	5,25	127,0	88,9	1/2"	X	1 1/2"	10,0
4040 B	172	7,8	146,0	101,8	5/8"	X	1 3/4"	12,0
4545 B	195	12,8	162,0	114,5	3/4"	X	2"	14,0
5050 B	275	15,3	177,5	127,0	7/8"	X	2 1/4"	14,0