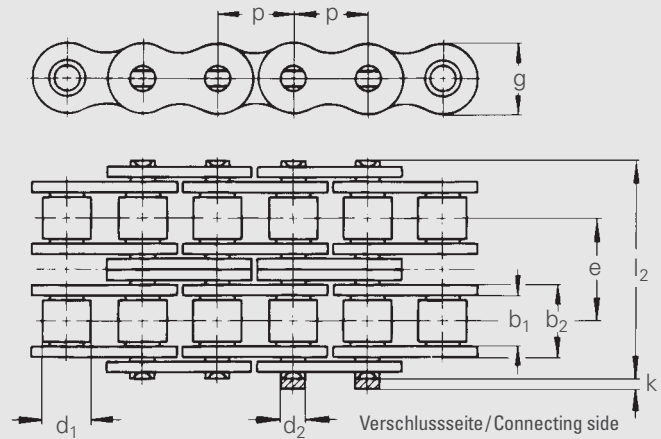
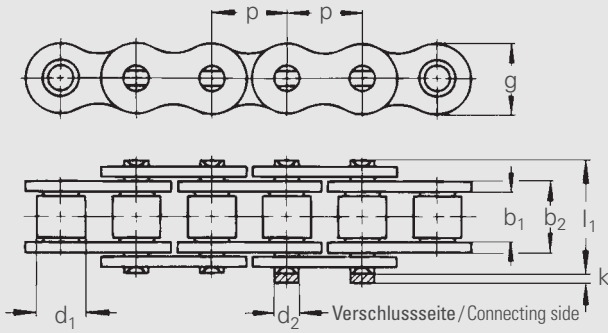


# Rollenketten „rostfrei“ - Rollenketten Reihe C „rostfrei“

Roller chains „stainless steel“ - Roller chains with straight side plates „stainless steel“



WITRA <sup>®</sup>	ISO	Teilung		Innere Breite	Innengliedbreite	Rollen-Ø	Bolzen-Ø	Quer-teilung	La-schen-höhe	Über-stand	Maß über Bolzen	Gelenk-fläche	Bruch-kraft ISO	Gewicht	Verbindungs-glieder
No.	No.	mm	inch	mm	mm	mm	mm	mm	mm	mm	mm	cm <sup>2</sup>	N	kg/m	Connecting links
		Pitch		Inner width	Inner link width	Roller-Ø	Pin-Ø	Transverse pitch	Plate height	Project. over conn. link	Width over pin	Bearing area	Breaking load ISO	Weight	Connecting links
		p		b <sub>1</sub> min.	b <sub>2</sub> max.	d <sub>1</sub> max.	d <sub>2</sub> max.	e	g max.	k max.	l max.	f	F <sub>B</sub> min.	q ≈	Type
WT 05 SS	05 B-1	8,000	-	3,00	4,77	5,00	2,31	-	7,1	3,1	8,6	0,11	5 000	0,18	A, E, C
WT 06 SS	06 B-1	9,525	3/8	5,72	8,53	6,35	3,28	-	8,2	3,3	13,5	0,28	9 000	0,41	A, E, L, C
WT 08 SS	08 B-1	12,700	1/2	7,75	11,30	8,51	4,45	-	11,8	3,9	17,0	0,50	12 000	0,68	A, E, L, C
WT 10 SS	10 B-1	15,875	5/8	9,65	13,28	10,16	5,08	-	14,7	4,1	19,6	0,67	15 000	0,91	A, E, L, C
WT 12 SS	12 B-1	19,050	3/4	11,68	15,62	12,07	5,72	-	16,1	4,6	22,7	0,88	17 000	1,12	A, E, L, C
WT 16 SS	16 B-1	25,400	1	17,02	25,40	15,88	8,27	-	21,0	5,4	36,1	2,07	40 000	2,64	A, E, S, L, C
WT 06-D SS	06 B-2	9,525	3/8	5,72	8,53	6,35	3,28	10,24	8,2	3,3	23,8	0,56	16 900	0,78	A, E, L, C
WT 08-D SS	08 B-2	12,700	1/2	7,75	11,30	8,51	4,45	13,92	11,8	3,9	31,0	1,00	22 000	1,35	A, E, L, C
WT 10-D SS	10 B-2	15,875	5/8	9,65	13,28	10,16	5,08	16,59	14,7	4,1	36,2	1,34	28 400	1,79	A, E, L, C
WT 12-D SS	12 B-2	19,050	3/4	11,68	15,62	12,07	5,72	19,46	16,1	4,6	42,2	1,76	37 200	2,22	A, E, L, C
WT 16-D SS	16 B-2	25,400	1	17,02	25,40	15,88	8,27	31,88	21,0	5,4	68,0	4,14	74 400	5,13	A, E, S, L, C

## Einfach Rollenketten Reihe C „rostfrei“ (gerade Laschen) Simplex roller chains with straight side plates „stainless steel“

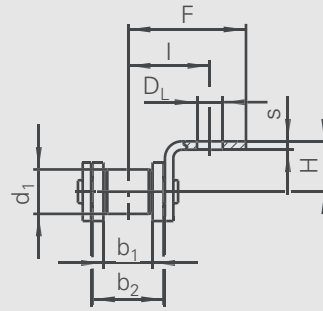
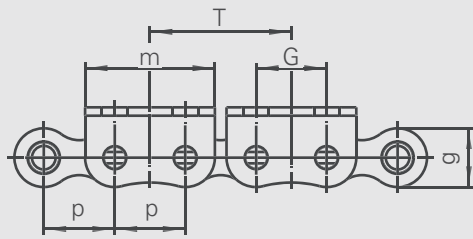
WT C 08 SS	08 B-1	12,700	1/2	7,75	11,30	8,51	4,45	-	11,8	3,9	17,0	0,50	12 000	0,68	A, E, L
WT C 10 SS	10 B-1	15,875	5/8	9,65	13,28	10,16	5,08	-	14,7	4,1	19,1	0,67	15 000	0,91	A, E, L
WT C 12 SS	12 B-1	19,050	3/4	11,68	15,62	12,07	5,72	-	16,1	4,6	22,7	0,88	17 000	1,12	A, E, L
WT C 16 SS	16 B-1	25,400	1	17,02	25,40	15,88	8,27	-	21,0	5,4	36,1	2,07	40 000	2,64	A, E, L
WT C 16 SS/24	-	25,400	1	17,02	25,40	15,88	8,27	-	24,0	5,4	36,1	2,07	40 000	2,64	A, E

## Verbindungsglieder / Connecting links

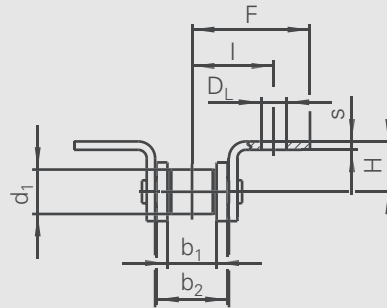
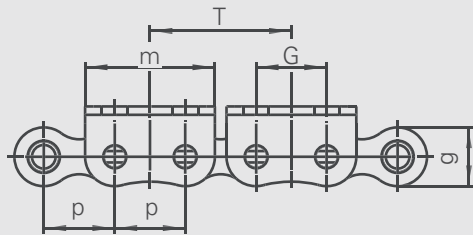


# Rollenketten „rostfrei“ mit breiten Winkel- und Flachlaschen

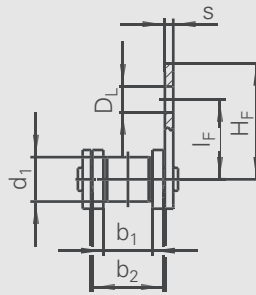
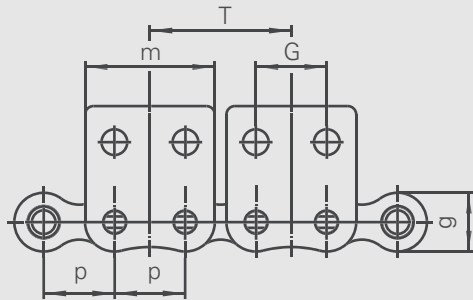
Roller chains „stainless steel“ with two hole bent and straight attachments



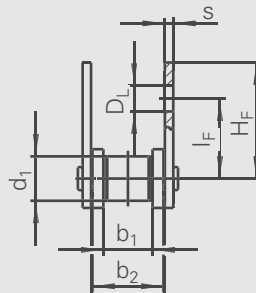
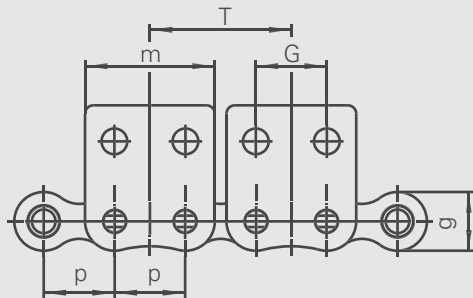
**A2**  
**einseitige Winkellaschen**  
bent attachments,  
one side



**B2**  
**zweiseitige Winkellaschen**  
bent attachments,  
both side



**D2**  
**einseitige Flachlaschen**  
straight attachments,  
one side

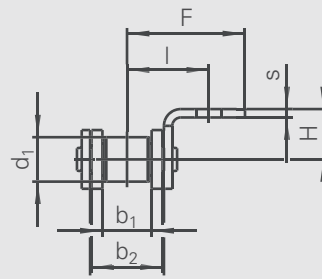
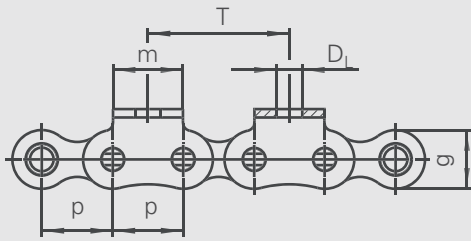


**E2**  
**zweiseitige Flachlaschen**  
straight attachments,  
both sides

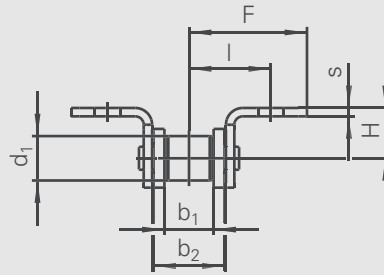
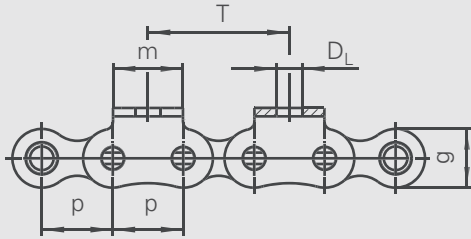
WITRA <sup>®</sup>		Similar ISO	Nennteilung		Innere Breite	Innengliedbreite	Rollen-Ø	Laschenhöhe	Bruchkraft DIN	Mitnehmer-Maße								
			Pitch		Inner width	Inner link width	Roller-Ø	Plate height	Breaking load DIN	Attachment dimensions								
			p		b <sub>1</sub> min.	b <sub>2</sub> max.	d <sub>1</sub> max.	g max.	F <sub>B</sub> min.	m	D <sub>L</sub>	G	I	F	H	I <sub>F</sub>	H <sub>F</sub>	s
No.	Ind.	No.	mm	inch	mm	mm	mm	mm	N	mm	mm	mm	mm	mm	mm	mm	mm	mm
WT 06 SS	<sup>1</sup>	06B-1	9,525	3/8	5,72	8,53	6,35	8,2	7 000	18,2	3,22	9,525	9,8	13,2	5,7	9,2	12,6	1,25
WT 08 SS		08B-1	12,700	1/2	7,75	11,30	8,51	11,8	12 000	23,2	4,50	12,700	13,1	19,0	10,0	14,7	20,3	1,60
WT 10 SS		10B-1	15,875	5/8	9,65	13,28	10,16	14,7	14 500	28,5	5,50	15,900	16,7	27,0	10,0	17,2	26,7	1,70
WT 12 SS		12B-1	19,050	3/4	11,68	15,62	12,07	16,1	18 500	33,6	6,60	19,100	18,5	29,0	11,0	18,7	29,0	1,80
WT 16 SS		16B-1	25,400	1	17,02	25,40	15,88	21,0	40 000	46,5	10,00	25,400	28,9	41,8	18,0	28,6	41,5	3,00

<sup>1</sup> nur mit geraden Laschen / <sup>1</sup> with straight side plates only

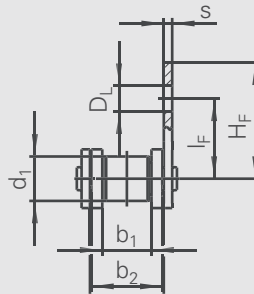
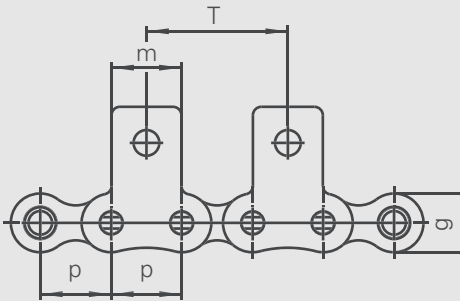
Keine Lagerware, nur auf Anfrage. / Not on stock, only on request.



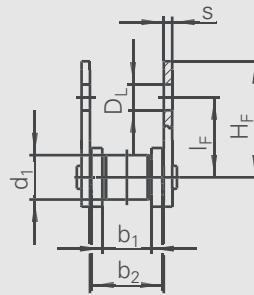
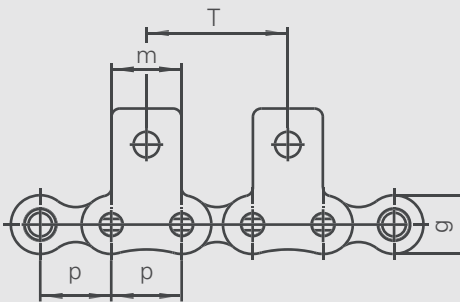
**A**  
einseitige Winkellaschen  
bent attachments,  
one side



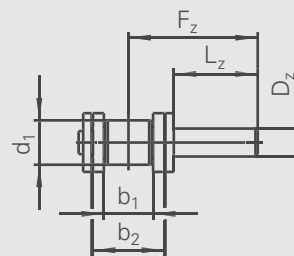
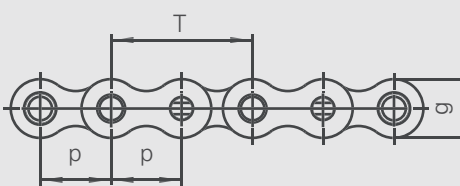
**B**  
zweiseitige Winkellaschen  
bent attachments,  
both side



**D**  
einseitige Flachlaschen  
straight attachments,  
one side



**E**  
zweiseitige Flachlaschen  
straight attachments,  
both sides



**F**  
einseitige Mitnehmerbolzen (auch versetzt wechselseitig möglich)  
extended pins, available  
on alternate sides

WITRA®		Similar ISO	Teilung		Innere Breite	Innengliedbreite	Rollen-Ø	Laschenhöhe	Mitnehmer-Maße											
No.	Ind.	No.	Pitch		Inner width	Inner link width	Roller-Ø	Plate height	Attachment dimensions											
			p		b <sub>1</sub> min.	b <sub>2</sub> max.	d <sub>1</sub> max.	g max.	m	D <sub>L</sub>	l	F	H	l <sub>F</sub>	H <sub>F</sub>	s	D <sub>Z</sub> h9	L <sub>Z</sub>	F <sub>Z</sub>	
			mm	inch	mm	mm	mm	mm	mm	mm	mm	mm	mm	mm	mm	mm	mm	mm	mm	mm
WT 05 SS		05 B-1	8,000	-	3,00	4,77	5,00	7,1	8,0	3,20	6,6	12,0	5,0	7,5	13,0	0,80	4,0	10	13,3	
WT 06 SS	<sup>1</sup>	06 B-1	9,525	3/8	5,72	8,53	6,35	8,2	8,0	3,50	9,5	13,5	6,5	9,0	13,4	1,25	5,0	15	20,7	
WT 08 SS		08 B-1	12,700	1/2	7,75	11,30	8,51	11,8	12,5	4,50	13,1	19,0	10,0	14,7	20,3	1,60	6,0	15	22,4	
WT 10 SS		10 B-1	15,875	5/8	9,65	13,28	10,16	14,7	15,0	5,50	16,7	27,0	10,0	17,2	26,7	1,70	6,5	20	28,5	
WT 12 SS		12 B-1	19,050	3/4	11,68	15,62	12,07	16,1	18,5	6,60	18,5	29,0	11,0	18,7	29,0	1,80	7,0	20	29,8	
WT 16 SS		16 B-1	25,400	1	17,02	25,40	15,88	21,0	25,0	10,00	28,9	41,5	18,0	41,8	28,6	3,00	10,0	30	45,9	

<sup>1</sup> nur mit geraden Laschen / <sup>1</sup> with straight side plates only

Keine Lagerware, nur auf Anfrage. / Not on stock, only on request.